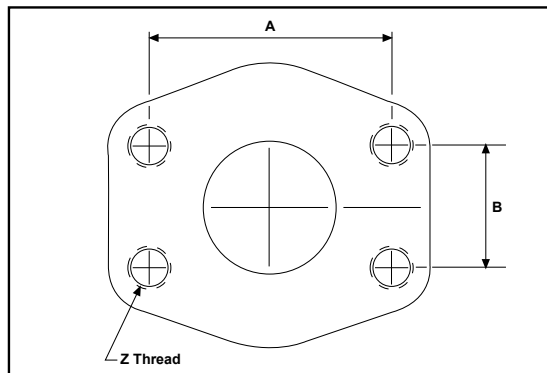


BUSHING RANGE - PORTING

Dimensions are for reference purposes only

SAE Flange Size (D)	Dash Size	A		B		Thread (Z)	
		mm	inches	mm	inches	Metric	UNC
1/2"	- 08	38.10	1.5	17.48	0.69	M8	5/16"
3/4"	- 12	47.63	1.88	22.23	0.88	M10	3/8"
1"	- 16	52.37	2.06	26.19	1.03	M10	3/8"
1 1/4"	- 20	58.72	2.31	30.18	1.19	M10	7/16"
1 1/2"	- 24	69.85	2.75	35.71	1.41	M12	1/2"
2"	- 32	77.77	3.06	42.88	1.69	M12	1/2"
2 1/2"	- 40	88.90	3.50	50.80	2.00	M12	1/2"
3"	- 48	106.38	4.19	61.93	2.44	M16	5/8"



Port Size	UNO (ODT)		
	Dash Size	Port ID (mm)	Thread
1/8"	- 05	6.85 (0.27)	5/16" - 24
1/4"	- 07	10.00 (0.39)	7/16" - 20
3/8"	- 09	13.00 (0.51)	9/16" - 18
1/2"	- 12	17.60 (0.69)	3/4" - 16
5/8"	- 14	20.50 (0.81)	7/8" - 14
3/4"	- 17	25.00 (0.98)	1 1/16" - 12
1"	- 21	31.30 (1.23)	1 5/16" - 12
1 1/4"	- 26	39.20 (1.54)	1 5/8" - 12
1 1/2"	- 30	45.60 (1.79)	1 7/8" - 12
2"	- 40	61.50 (2.42)	2 1/2" - 12

mm (inches) UNF

Port Size	NPT		
	Dash Size	Port ID (mm)	Thread
1/8"	- 02	10.32 (0.40)	1/8" - 27
1/4"	- 04	13.89 (0.55)	1/4" - 18
3/8"	- 06	17.06 (0.67)	3/8" - 18
1/2"	- 08	21.43 (0.84)	1/2" - 14
5/8"	NA	NA	NA
3/4"	- 12	26.98 (1.06)	3/4" - 14
1"	- 16	33.33 (1.31)	1" - 11 1/2
1 1/4"	- 20	42.46 (1.67)	1 1/4" - 11 1/2
1 1/2"	- 24	48.42 (1.90)	1 1/2" - 11 1/2
2"	- 32	60.32 (2.37)	2" - 11 1/2

mm (inches) NPT

Port Size	BSPP		
	Dash Size	Port ID (mm)	Thread
1/8"	- 02	8.59 (0.34)	1/8" - 28
1/4"	- 04	11.46 (0.45)	1/4" - 19
3/8"	- 06	14.96 (0.59)	3/8" - 19
1/2"	- 08	18.65 (0.73)	1/2" - 14
5/8"	NA	NA	NA
3/4"	- 12	24.13 (0.95)	3/4" - 14
1"	- 16	30.30 (1.19)	1" - 11
1 1/4"	- 20	38.97 (1.53)	1 1/4" - 11
1 1/2"	- 24	44.86 (1.77)	1 1/2" - 11
2"	- 32	56.67 (2.23)	2" - 11

mm (inches) BSPP